

CHARMY LED Display / Undercabinet shelf Light

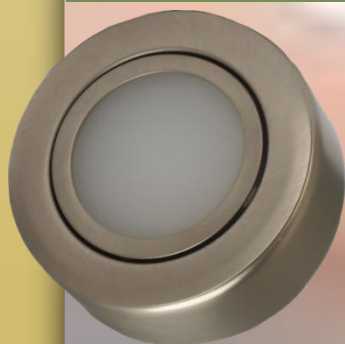
These surface mounted or recessed energy efficient LED downlight are made from steel which would be perfect in display cabinets or kitchens. Even though it is energy efficient which results in low energy costs it still gives high light output, and is cool to touch.

Power : AC/DC 12V 2W SMD 5050 (12 LED's)

Use standard AC Halogen Transformer or DC LED driver

Color Temperature: 2700/4000/6000K

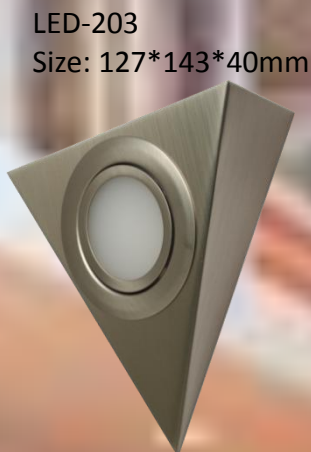
Surface Mounted



LED-2116B+CAN
Dia. 72*25mm



LED-2116H
Size: 82*28mm

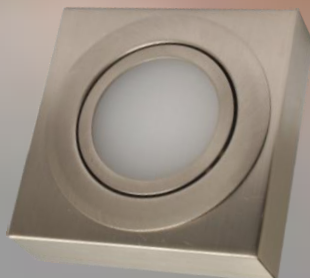


LED-203
Size: 127*143*40mm



LED-201
Size: 200*200*32mm

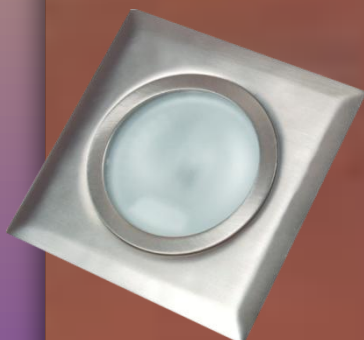
Recessed



LED-2116B+SCAN
Size: 80*80*25mm



LED-2116B
Dia. 72mm

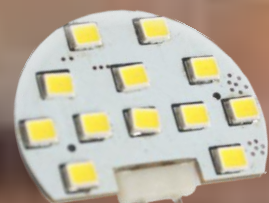


LED-2116F
Size: 72*72mm



LED-3312
Dia. 77mm

DIRECT REPLACE HALOGEN JC BULBS WITHOUT CHANGING THE TRANSFORMER



LED JC AC/DC 2W
G4 180 Lumens



Charming-Lite Manufacturing Co Ltd
Unit 12-13 2/F International Trade Centre
11-19 Sha Tsui Road Tsuen Wan Hong Kong
Tel: 852 26119658 Fax: 852 24149003
Email : info@charming-lite.com

www.charming-lite.com